



Kensho™ Round Vessel
in Grey Foussana
K-8324-CS7

Kensho™ Stone Artist Editions Bathroom Sinks

THE BOLD LOOK
OF **KOHLER**®

Introducing the Kensho™ Collection for Artist Editions

Kensho Collection of Natural Stone Lavs now available



Introducing two stunning stone sinks that act as functional works of art for the bathroom. Kensho sinks offer modern forms inspired by nature and minimalist designs influenced by Eastern motifs and textile patterns. With their sinuous silhouettes and simple decoration, Kensho redefines a utilitarian product.

Kensho consist of two sinks styles: The Round Vessel and the 28-inch Oval Trough, as well as an optional drain cover accessory. Both shapes feature a pattern etched into the stone's surface inspired by Japanese decorative kimono stitching technique, Sashiko. Both sink styles are offered in two natural stones: Grey Foussana and Biancone.

The intricate pattern is etched into the surface of the stone, employing a labor intensive acid etching process performed with handmade stencils. The pattern etching is then filled in with a metallic-champagne gold finish, a delightful pairing with either gold or silver faucet finishes.

Kohler® is the only sink manufacturer applying this technique to a stone material, and the result is certain to be the focal point of any space. With their unusual design, superior materials and unique cultural references, Kensho sinks have a story that's all their own.

Please find attached the following: spec sheets (2); Kensho Sell Sheet; care and cleaning details for natural stone; and natural stone variation guide.

THE BOLD LOOK
OF **KOHLER**®

Kensho™ Stone

Artist Editions Bathroom Sinks

Design Inspiration

Kensho is inspired by Japanese Sashiko Kimonos. It expresses the Sashiko patterns in stone with inspiration from an Italian etching technique known as Acquaforate. Kensho is inspired by nature, patterns and textiles utilizing a traditional material and technique on contemporary form.

Product Offering

The Kensho collection is available as a round vessel or oval trough vessel in two new natural stone colors: a light, neutral Biancone from Italy, and a striking Grey Foussana from Tunisia.

Innovative Design

Until now, the beautiful pattern technique featured on Kensho bathroom sinks has traditionally only existed on tiles.

Cleaning Recommendations

Due to the coated surface, please use special care when cleaning to avoid removing the beautiful patterned detail featured on Kensho bathroom sinks.

Optional Accessory

Matching stone drain cover that sits over the drain grid.



Round Vessel in
Grey Foussana*
K-8324-CS7



Oval Trough Vessel
in Grey Foussana*
K-38225-CS7



Round Vessel in
Biancone*
K-8324-CS6



Oval Trough Vessel
in Biancone*
K-8324-CS7

Description	Stone Color	SKU	Dimensions
Round Vessel	Grey Foussana	K-8324-CS7	16" x 16" x 4-1/2"
Round Vessel	Biancone	K-8324-CS6	16" x 16" x 4-1/2"
Oval Trough Vessel	Grey Foussana	K-8325-CS7	27-15/16" x 14-1/16" x 7-5/8"
Oval Trough Vessel	Biancone	K-8325-CS6	27-15/16" x 14-1/16" x 7-5/8"
Drain Cover	Grey Foussana	K-95069-CS6	3-3/8" x 3-3/8"
Drain Cover	Biancone	K-95069-CS6	3-3/8" x 3-3/8"

*Shown with optional drain cover

THE BOLD LOOK
OF **KOHLER**®

Kensho™ Bathroom Sinks

Beautiful, Natural Stone

Product Material – Natural Stone:

Biancone: a cream colored marble

Grey Foussana: a grey limestone

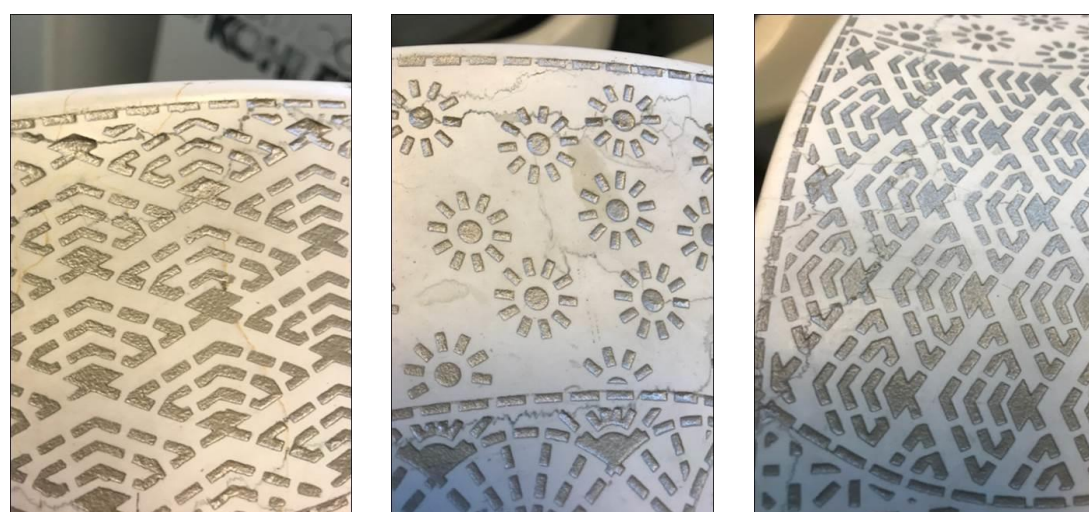


Each sink is unique

Each stone surface has its own distinct characteristics based on the specific cut of the natural stone and the manual etching process. This individuality makes each stone fixture a unique and original addition to the customer's home.

Expected Variations

Biancone:



Gray Foussana:



Care & Cleaning

- Use only a mild soap, warm water and soft cloth to wipe the surface clean.
- Avoid detergents that contain chemicals high in acid or alkaline.
- Do not use bristle brushes, scouring pads, steel wool, or abrasive cleaners. They will scratch the decorated surface.
- Keep chemicals such as bleach, fingernail polish remover, fingernail polish, oils, etc. away from your sink to prevent the potential of staining or damage.
- If staining does occur, use a stain remover specifically formulated for natural stone. Kohler Co. recommends that you test your stone stain remover on an inconspicuous area of the sink before applying to any stain.
- Kensho bathroom sinks have been treated with FILA MP90, a natural look, penetrating sealer. Bi-annual applications of a similar, solvent-based sealer will be required to protect the finish. If your sink is used often, more frequent sealer application may be necessary.

Kensho™ Bathroom Sinks

Carved from natural stone, each sink is unique and shows distinctive variations in stone characteristics such as color, veining, and markings.

Biancone (-CS6)

A cream colored marble

Veins and Fissures



Dark Lines



Red Lines



Dark Patches



Small Spots



Kensho™ Bathroom Sinks

Carved from natural stone, each sink is unique and shows distinctive variations in stone characteristics such as color, veining, and markings.

Grey Foussana (-CS7)

A grey limestone

White Veins



Dark Lines



Dark Patches

